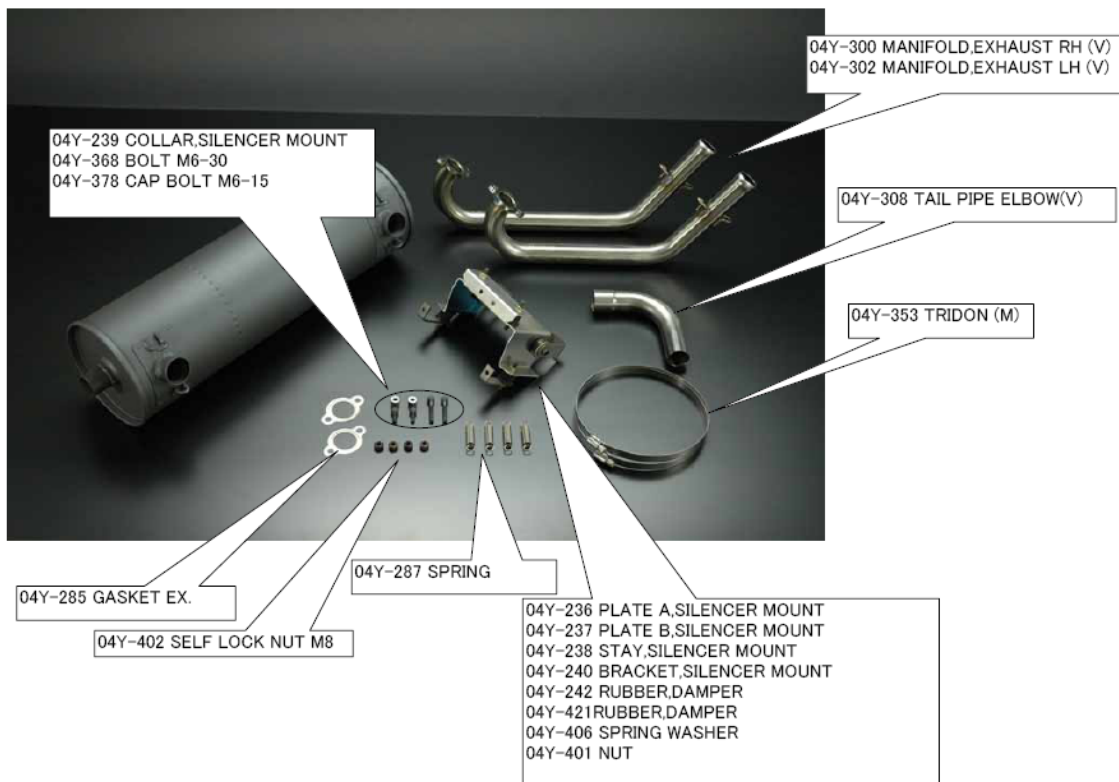


04Y-479 TYPE 5 MUFFLER SET

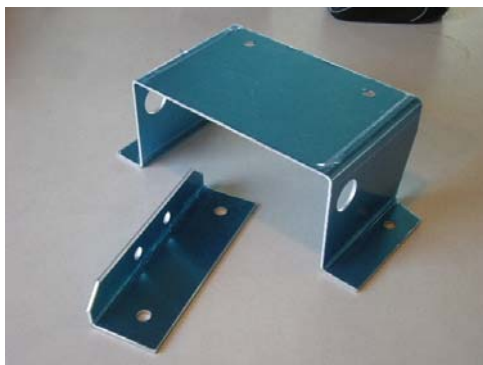


The Type 5 Exhaust kit comes with the following parts:

DESCRIPTION	Part Number	QTY
PLATE A, SILENCER MOUNT	04Y-236	1
PLATE B, SILENCER MOUNT	04Y-237	1
STAY, SILENCER MOUNT "L" bracket	04Y-238	2
COLLAR, SILENCER MOUNT spacer	04Y-239	2
BRACKET, SILENCER MOUNT "U" bracket	04Y-240	2
RUBBER, DAMPER	04Y-242	4
GASKET EX.	04Y-285	2
SPRING (Exhaust Spring)	04Y-287	4
MANIFOLD, EXHAUST RH (V)	04Y-300	1
MANIFOLD, EXHAUST LH (V)	04Y-302	1
MAIN MUFFLER (V) (note the same muffler is used in the Type 4 Muffler)	04Y-306	1

TAIL PIPE ELBOW(V)	04Y-308	1
TRIDON (M) HOSE CLAMP	04Y-353	2
BOLT M6-30	04Y-368	2
BOLT M6-35	04Y-369	2
CAP BOLT M6-15	04Y-378	2
M6 NUT	04Y-401	10
SELF LOCK NUT M8 (manifold nut)	04Y-402	4
SPRING WASHER (split lock washer)	04Y-406	10
RUBBER, DAMPER	04Y-421	2

Parts for the Type 5 Exhaust are as follows:



04Y-236 PLATE A, SILENCER MOUNT (Quantity 1)

Upper larger plate in the picture at the left

04Y-237 PLATE B, SILENCER MOUNT (Quantity 1)

Lower smaller plate in the picture at the left

Note: mounts are covered with a blue plastic film to protect the finish. Blue film can be removed after assembly and installation.



04Y-238 STAY, SILENCER MOUNT "L" Bracket
(Quantity 2)

Pictured at the left



04Y-239 COLLAR, SILENCER MOUNT spacer
(Quantity 2)

Pictured at the left



04Y-240 BRACKET,SILENCER MOUNT "U"
Bracket (Quantity 2)
Pictured at the left



04Y-242 RUBBER,DAMPER (Quantity 4)
Pictured at the left



04Y-285 GASKET EX. (Quantity 2)
Pictured at the left



04Y-287 SPRING (Exhaust Spring) (Quantity 4)
Pictured at the left



04Y-300 MANIFOLD
EXHAUST RH (V)
(Quantity 1)
Pictured at the left



04Y-302 MANIFOLD
EXHAUST LH (V)
(Quantity 1)
Pictured at the left



04Y-306 MAIN MUFFLER (V)
(Quantity 1)
Pictured at the left



04Y-308 TAIL PIPE ELBOW(V) (Quantity 1)
Pictured at the left



04Y-353 TRIDON (HOSE CLAMP) (Quantity 2)
Pictured at the left



04Y-368 BOLT M6-30 (Quantity 2)
Pictured at the left



04Y-369 BOLT M6-35
Pictured at the left



04Y-378 BOLT M6-15
Pictured at the left



04Y-369 BOLT M6-35

04Y-368 BOLT M6-30

04Y-378 BOLT M6-15

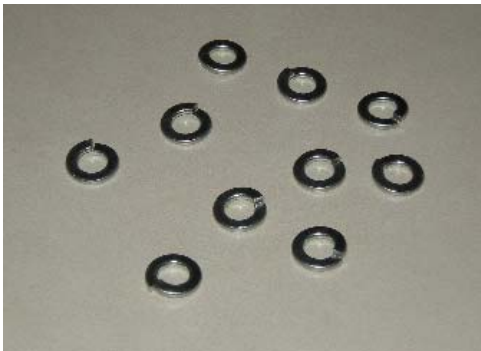


04Y-401 M6 NUT
Pictured at the left



04Y-402 SELF LOCKING NUT M8 (Exhaust manifold nut)

Pictured at the left



04Y-406 SPRING WASHER (split lock washer)

Pictured at the left



04Y-421 RUBBER,DAMPER

Note: 4 fender washers, 2 spacers, and 4 rubber grommets are included in with this part number.

Pictured at the left

Type 5 Exhaust Installation instructions

Step 1

Go through all the parts as listed and shown above to make sure that all parts are available and nothing is missing.

Step 2



Remove 2 M6 bolts from the back of the engine as shown in the picture at the left. Note: These bolts, after they are removed will not be used again. These bolts will be replaced in the next step with the BOLT M6-30 04Y-368 provided with the the Type 5 Exhaust kit.

Step 3



Install the STAY, SILENCER MOUNT "L" bracket (04Y-238) with the COLLAR, SILENCER MOUNT spacer (04Y-239) and the BOLT M6-30 (04Y-368) as shown in the picture at the left.

Step 4



Install two of the four RUBBER, DAMPER (04Y-242) to the PLATE A SILENCER MOUNT (04Y-236) with two of the ten SPRING WASHER split lock washer (04Y-406) and two of the ten M6 NUT (04Y-401) as shown in the picture at the left.

Step 5



Install the remaining two RUBBER, DAMPER (04Y-242) with two of the ten SPRING WASHER split lock washer (04Y-406) and two of the ten M6 NUT (04Y-401) to the STAY, SILENCER MOUNT "L" bracket (04Y-238) installed in Step 3.

Step 5



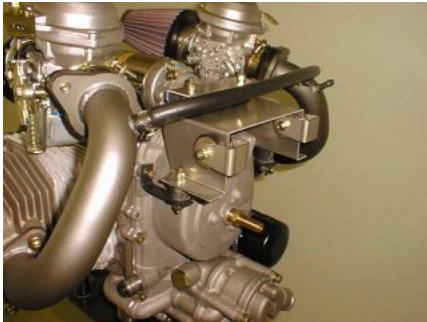
Attach PLATE A SILENCER MOUNT (04Y-236) prepared at Step 4. The attachment will require two of the ten SPRING WASHER split lock washer (04Y-406) and two of the ten M6 NUT (04Y-401).

Step 6



Install PLATE B SILENCER MOUNT (04Y-237) to top the two RUBBER, DAMPER (04Y-242) that are on top of PLATE A SILENCER MOUNT (04Y-236) installed in the previous step. The attachment will require two of the ten SPRING WASHER split lock washer (04Y-406) and two of the ten M6 NUT (04Y-401).

Step 7



Install the RUBBER DAMPER (04Y-421) and the BRACKET,SILENCER MOUNT "U" Bracket (04Y-240) with BOLT M6-35 (04Y-369) and two of the ten SPRING WASHER split lock washer (04Y-406) and two of the ten M6 NUT (04Y-401).

Step 8



Install MANIFOLD,EXHAUST RH (V) (04Y-300) and MANIFOLD,EXHAUST LH (V) (04Y-302) with the four SELF LOCK NUT M8 (manifold nut) (04Y-402) and two GASKET EXHAUST (04Y-285). Install the MAIN MUFFLER (V) (04Y-306) on the manifold pipes and use the TRIDON (M) HOSE CLAMP (04Y-353) to secure the exhaust to the BRACKET,SILENCER MOUNT "U" Bracket (04Y-240) installed in step 7 using the two TRIDON (M) HOSE CLAMP (04Y-353). Tighten the hose clamps securely to hold the muffler firmly in place. Connect the muffler the manifold pipes using the four SPRING Exhaust Spring (04Y-287). Connect the tail pipe to the muffler to direct exhaust gases down and away from the engine.

Cross Reference of Part Numbers for all HKS Exhaust Systems

Description	P/N	Type 1	Type 2	Type 4	Type 5	Type 6
MAIN MUFFLER (VI)	053-003					1
PIPE, EXHAUST-TYPE6 RH	053-002					1
PIPE, EXHAUST-TYPE6 LH	053-001					1
PIPE, EXHAUST-TYPE4 RH	04Y-475			1		
PIPE, EXHAUST-TYPE4 LH	04Y-474			1		
MANIFOLD, EXHAUST-TYPE4	04Y-473			2		2
RUBBER, DAMPER	04Y-421				2	
SELF LOCK NUT M8	04Y-402	4	4	4	4	4
NUT	04Y-401				10	
CAP BOLT M6-15	04Y-378				2	
BOLT M6-35	04Y-369				2	
BOLT M6-30	04Y-368				2	
TRIDON (M)	04Y-353				2	
TAIL PIPE ELBOW(V)	04Y-308			1	1	
MAIN MUFFLER (V)	04Y-306	0		1	1	
MAIN MUFFLER (S)	04Y-305	1	1			
JUNCTION (STD)	04Y-303	1	1			
MANIFOLD, EXHAUST LH (V)	04Y-302				1	
MANIFOLD, EXHAUST RH (V)	04Y-300				1	
MANIFOLD, EXHAUST LH (R)	04Y-298		1			
MANIFOLD, EXHAUST RH (R)	04Y-296		1			
MANIFOLD, EXHAUST LH (S)	04Y-294	1				
MANIFOLD, EXHAUST RH (S)	04Y-292	1				
SPRING	04Y-287	4	4	8	4	8
GASKET EX.	04Y-285	2	2	2	2	2
RUBBER, DAMPER	04Y-242				4	
BRACKET, SILENCER MOUNT	04Y-240				2	
COLLAR, SILENCER MOUNT	04Y-239				2	
STAY, SILENCER MOUNT	04Y-238				2	
PLATE B, SILENCER MOUNT	04Y-237				1	
PLATE A, SILENCER MOUNT	04Y-236				1	
SPRING WASHER	04Y-406				10	